



ASIAN GRAMMAR SCHOOL

1st Term Assessment – 2017

Science

Grade 09

Marks

Name

Class.....

Prepared By Ms. Madara Wanniaichchi

2 ½ hours

Part I

Underline the most suitable answer

- Which one is used for the measuring of small quantity of liquid volume accurately?
1) Beaker 2) Flask 3) Measuring cylinder 4) Burette
- An example for virus causing disease.
1) Tuberculosis 2) Syphilis 3) Rabies 4) Malaria
- Not an example for the constellation in the Zodiac,
1) Aquarius 2) Capricorn 3) Virgo 4) Canis major
- Cholera is spread by,
1) Air 2) Water 3) Vectors 4) All of them
- What is the following constellation



- Orion
- Taurus
- Gemini
- Canis major

- What is the incorrect method of compost production,
1) Pit method 2) Barrel method 3) Plate method 4) Basket method
- GallelioGalili made a telescope and observed,
1) Sunspots 3) Phases of the planet Venus
2) Mountains and craters on moon 4) All of them

8. What is the star pattern that indicates the north?
 - 1) Southern cross 2) Orion 3) Ursa major 4) Canis major
9. What is the unit of the potential difference?
 - 1) Volts (V) 2) Amperes (A) 3) Ohm (Ω) 4) Watt (W)
10. Since a sphere has 360° and there are twelve constellations, the space in the sky for each constellation is,
 - 1) 45° 2) 60° 3) 30° 4) 15°
11. Not a laboratory equipment made up of glass,
 - 1) Petri dish 2) Watch glass 3) Burette 4) Mortar & Pestle
12. The Philosopher who stated that the earth is a sphere is,
 - 1) Aristotle 2) Pythagorus 3) Thales 4) Samos
13. Multimeter can be used to measure,
 - 1) Current flow 2) Voltage 3) Resistance 4) All of them
14. Sweet toddy is converted into ethyl alcohol by,
 - 1) Bacteria 2) Yeast 3) Lactobacillus 4) Penicillium
15. An example for unicellular micro-organism is,
 - 1) Plasmodium 2) Entamoeba 3) Yeast 4) All of them
16. An instance/(s) that the scientific method can be used in day to day life is,
 - 1) When diagnosing a disease by a doctor.
 - 2) When searching for evidence of a criminal by police.
 - 3) Identifying a trouble of a motor car when repairing.
 - 4) All above.
17. A hypothesis is,
 - 1) A conclusion received by observations. 3) An assumption related to a problem.
 - 2) A permanent solution to a problem. 4) A control test related to a problem.
18. Boiling tubes are made using
 - 1) Soda glass 2) Plastic 3) Boro-silicate glass 4) Porcelain
19. An example for antibiotic is,
 - 1) Aspirin 2) Amoxycillin 3) Panadol 4) Vitamin C
20. Which is the correct statement about compound microscope?
 - 1) It always use light rays
 - 2) Simple microscope is an example for compound microscope
 - 3) It always contains more than one lens
 - 4) All of above are true.

(20 marks)

Part II

Answer all questions

- 1) 1. Draw line diagrams of the following laboratory equipments.
(Test tube, funnel, bulb pipette, beaker, conical flask) (10 marks)

2. I. Food spoilage is the one of the harmful effects of micro-organisms. What is food spoilage?

II. Write two types of micro-organisms that cause food spoilage.

III. There are three ways of food spoilage. Name them.

a. Protein - b. Carbohydrate - c. Lipids and oil-

IV. Write three methods to minimize food spoilage with one example for each.

V. Give two examples for dairy products by using micro-organisms.

(10 marks)

- 2) 1. The student has mentioned that the lime water in an open petri-dish was converted into milky white after few hours.

i. Resolve the problem using scientific method.

ii. Draw a diagram of the main set of instruments prepared to test the hypothesis and name its parts.

iii. Draw a diagram of set of instruments used for control experiment and name its parts.

(10 marks)

- 3) 1. Write down the two main theories related to the location of the celestial objects.

2. i. What is the brightest star in the sky?

ii. To which constellation the above star belongs?

iii. What is the special feature about pole star and explain the reason?

iv. Mention three advantages of studying constellations.

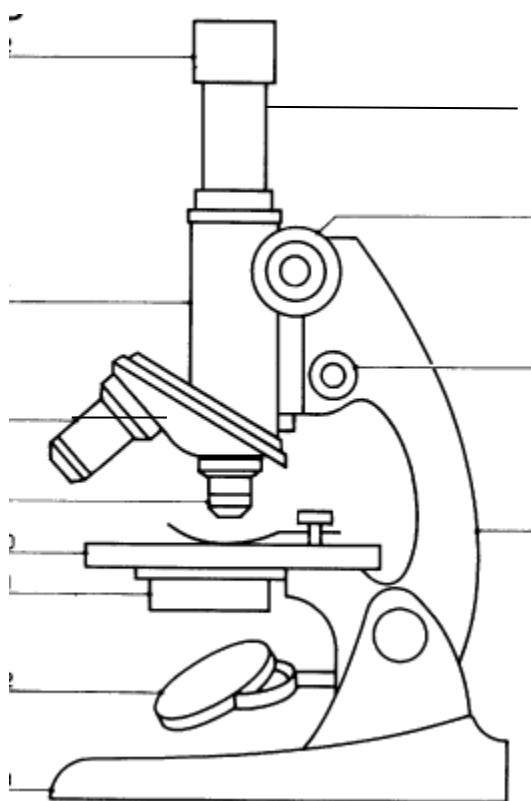
(10 marks)

- 4) 1. Give the one usage of each of the following micro-organisms.
(Yeast, Acetobactor, Penicillium, Lactobacillus, Pectinase secreting bacteria)
(5 marks)
2. During the curd production, few spoons of previously prepared curd sample is added to the mixture. Why?
3. Complete the table.

	Ammeter	Voltmeter
Use to measure		
Units of measurements		
Symbol in circuit drawing		
How does it connect to the circuit (draw the circuit)		

(10 marks)

- 5) 1. Name the parts of the following light microscope.



2. A light microscope has the magnification of eyepiece and the objective lens refers as X10 and X25.
- What is the meaning of magnification?
 - Write the word equation for the magnification power of the light microscope.
 - Calculate the magnification power of the light microscope using given values.

(20 marks)